

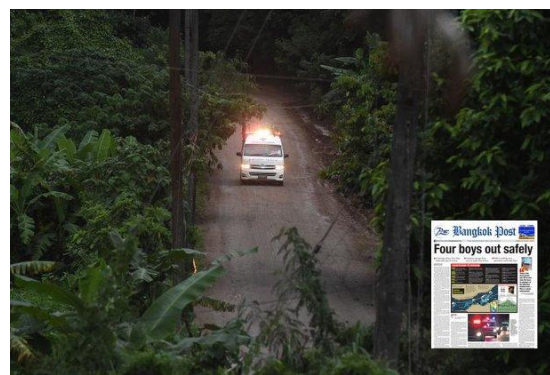


**Document No.ACMM-info-004 - 19 /2018**

**Date 9 July, 2018**

**Spot report : The first four came out from Thum Luang complex cave, Chiangrai, Thailand**

## Background



Rescue operation to bring out 13 trapped people, members of the Mu Pa Academy football club, had developed since 1000 hrs local time on 8 July, 2018, the incident commander, Narongsak Osottanakom said. This operations was done by 13 international cave diving experts and five elite rescuers from Thai Navy Seal joined the operation. Each boy will be escorted by two rescuers. The heavy rain threatened to a complicated operation. More rain is forecasted in the coming day. The operation rush by water and time.

The first boy came out of the cave at about 5 p.m. local time, follow by the second. The third and fourth boy came out 7.35 p.m. amd 7.47 p.m. All of them received a medical check at field hospital that located in front of the cave, before taking them to the Chiang Rai Prachanukroh hospital.

## Actions Taken

As soon as the boy came out of the cave, they will be assessed from medical team, before taking them to Chiang Rai Prachanukroh hospital. The medical assessments will focus on breathing, signs of hypothermia and an airborne lung infection.

The first two boy were immediately airlifted to Chiang Rai Prachanukroh hospital for further medical examination followed by the third boy. The fourth boy were sent to the hospital by ground medical evacuation.

## ASSESSMENT OF NEEDS -

### **Severity ranking of the concerns effect in the ASEAN region.**

<b>Section</b>	<b>Ranking</b>	<b>Issues identified</b>	<b>Recommendations</b>
<b>The first four came out from Thum Luang complex cave, Chiangrai, Thailand</b>	<b>G</b>	Heavy rain is forecasted throughout the week that might cause difficulty for rescue operations. The assessment of this situation is green.	AMS is monitoring situation closely.

#### **Remarks:**

**R:** Severe Situation: Urgent intervention required.

**Y:** Situation of concern: Surveillance or assistance may or may not require, intensive monitoring

**G:** Relative normal situation or local Government can cope with the crisis, monitoring and no action required.

**NA:** Lack of /unreliable data: Further assessment required.

#### **ACMM Recommendations,**

More rain is forecasted that make the rescue operations more difficult. During this period, the ACMM is monitoring the situation for providing medical information update to member countries.

#### **References:**

1. <https://www.theaustralian.com.au>
2. [www.bangkokpost.com](http://www.bangkokpost.com)
3. [www.CNN.com](http://www.CNN.com)
4. [www.reuters.com](http://www.reuters.com)
5. Thainavyseal facebook